

产品规格书 Product Datasheet

型号 Model: Rb-LB-G762.9Y01

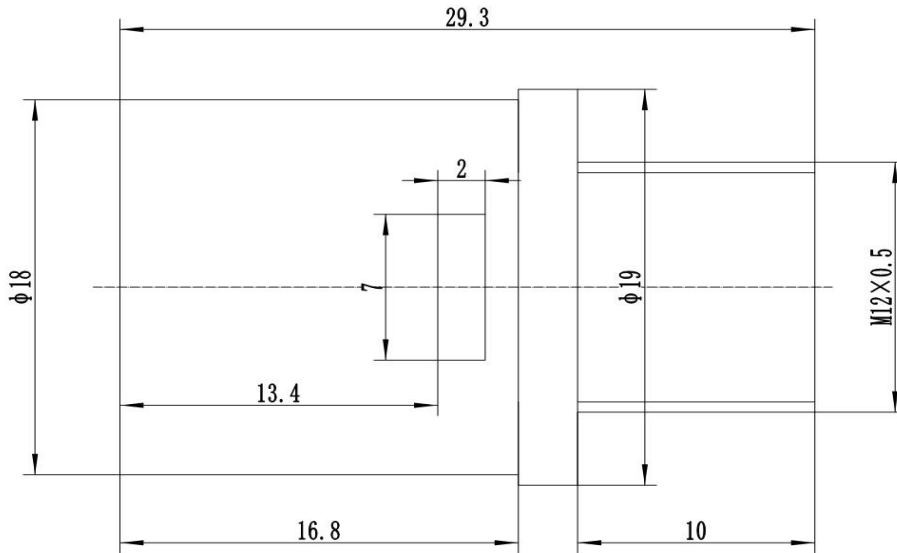
产品类型 Lens Type: 液态板机镜头 / Liquid S--mount lens

性能参数 Spec Parameters:

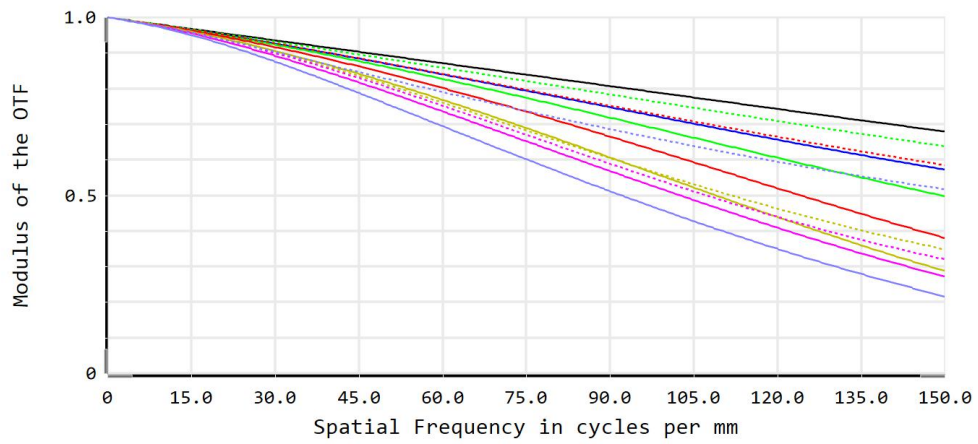
焦距 Focal Length (f) /mm	6
最大像圆 Max. Image Circle /mm	Ø8
光圈 Aperture F#	2.9
畸变 Distortion /%	13
接口 Mount	M12
净重 Net Weight/g	14.4g
工作温度 Operating Temperature	-10°C~+50°C
存储温度 Storage Temperature	-20°C~+60°C

外形尺寸 Mechanical Size

Unit: mm



MTF Diagram



— Diff. Limit-Tangential	--- Diff. Limit-Sagittal	— 0.00 (deg)-Tangential	--- 0.00 (deg)-Sagittal	— 10.11 (deg)-Tangential
--- 10.11 (deg)-Sagittal	— 16.85 (deg)-Tangential	--- 16.85 (deg)-Sagittal	— 23.80 (deg)-Tangential	--- 23.80 (deg)-Sagittal
— 33.70 (deg)-Tangential	--- 33.70 (deg)-Sagittal	— 37.50 (deg)-Tangential	--- 37.50 (deg)-Sagittal	— 37.50 (deg)-Tangential
--- 37.50 (deg)-Sagittal				

Polychromatic Diffraction MTF	
2023/7/28 Data for 0.4860 to 0.6560 μm . Surface: Image	Zemax Zemax OpticStudio 17
Legend items refer to Field positions	LB-G762.9Y01.ZMX Configuration 1 of 1